

A selection from our
WALKING STICKS COLLECTION



 *MS Rau Antiques*
Antiques • Fine Art • Jewelry LLC



UNIVERSAL EXHIBITION CANE

The sterling handle of this elegant French malacca cane commemorates the unveiling of the Eiffel Tower at the 1889 Universal Exhibition in Paris. #29-3164



SILVER ART NOUVEAU CANE

Crafted of fine silver, the elegant Art Nouveau opera handle of this laurel walking stick is chased with floral sprays. Circa 1900. #29-3158



RHINOCEROS HORN CANE

Carved to resemble the head of a duck, a rare rhinoceros horn was used for the handle of this stylish walking stick. A highly desirable material, rhinoceros horn is used in many cultures as an aphrodisiac. Circa 1900. #29-4007



ULYSSES S. GRANT CANE

A bust of Ulysses S. Grant serves as the handle of this rare cane. This faithful representation of the president's likeness is accented by an engraved collar atop an ebonized thorn shaft. Circa 1870. #29-4008

M.S. Rau Antiques has recently acquired an outstanding selection of walking sticks, from the fabulously decorative to the intriguing and unusual, that rival those found in the finest museums and private collections. To see our entire collection, visit our New Orleans gallery or our website www.rauantiques.com.

LE SPHINX BORDELLO CANE

This exotic cane is engraved with a sphinx's head and the famed address "31 Bld. Edgar Quinet", the site of French Art Deco brothel Le Sphinx, and conceals a fiber-wrapped erotic whip within its lacquered bamboo shaft. Circa 1930. #29-3993

JAPANESE SAMURAI SWORD CANE

This exceptional walking stick is actually a fearsome weapon of the Japanese samurai. Simply push the button on the collar of this unassuming cane to release the hand-wrought blade hidden within the shaft. Circa 1870. #29-3008

TOLEDO BLUE STEEL SWORD CANE

Topped with an intricately inlaid knob handle, the shaft of this bamboo walking stick hides a blade of blue Toledo steel. Legendary for their strength, Toledo swords are considered the finest blades in the world. Circa 1860. #29-3117





WOODEN LOVERS CANE

A pair of lovers entwined is carved into the wooden crook handle of this handsome walking stick. Set atop a shaft of cane wood, this artful handle displays a sensuous grace. Circa 1880. #29-3983



IVORY HANDLE EROTIC CANE

A reclining lady being caressed by a leering satyr forms the carved ivory handle of this dramatic cane. Fashioned with an ebony shaft and marked "J. Boulton & Co. Markers/Steel Lined." Circa 1880. #29-3849



LONG NOSE EROTIC CANE

At first glance, the carved horn handle of this erotic walking stick appears to be a man with a very long nose. Upon closer inspection, this gentleman's protruding proboscis reveals itself to be something else entirely! Circa 1890. #29-3978



EROTIC LADY CANE

The lady perched atop this naughty erotic cane takes great pleasure with a phallic object underneath her skirt. By removing the wedge attached to her ankle, this cane's erotic nature is revealed. Circa 1880. #29-3979



PHARMACY CANE

This rare pharmacy cane contains a full set of the medical instruments a physician would need when making house calls. In excellent, complete condition, the entire interior of the cane pulls out, revealing labeled glass vials, paper packets labeled "Pharmacie Portative," a small lamp with an unused wick, scalpels, a glass syringe and needles, bandages, safety pins, a spool of twine and a roll of gauze, all held in their individual compartments. #29-4001



MUSIC CONDUCTOR'S CANE

Harmony truly informs the design of this rare and intriguing cane. With musical notes decorating its shaft, this cane allows beautiful music to be made in any setting thanks to a tuning fork, a conductor's baton with ivory and silver accents, and a roll of blank sheet music, all held within its shaft. Circa 1908. #29-3992

FIGHTING SOLDIERS CANE

Crafted in amazing detail, the silvered handle of this WWI cane depicts a French soldier winning in fierce hand-to-hand combat with a German soldier. Circa 1915. #29-4009

QUASIMODO CANE

A bust of Quasimodo from Victor Hugo's *The Hunchback of Notre Dame* is set upon an ebonized thorn shaft in this evocative walking stick. Circa 1900. #29-3989

GARDEN OF EDEN CANE

Eve's fateful conversation with the Snake in the Garden of Eden is rendered in great detail on the silver crook handle of this elegant Art Nouveau cane. Circa 1900. #29-3156

GOLD HANDLED CANE

An intricately chased gold crutch handle tops the ebony shaft of this exceptional walking stick. Displaying a dramatic scrolling acanthus pattern, the handle is inscribed "*From his employee, June 25.95*" and bears the initials "T.C.B." on the front heel. Circa 1895. #29-2827



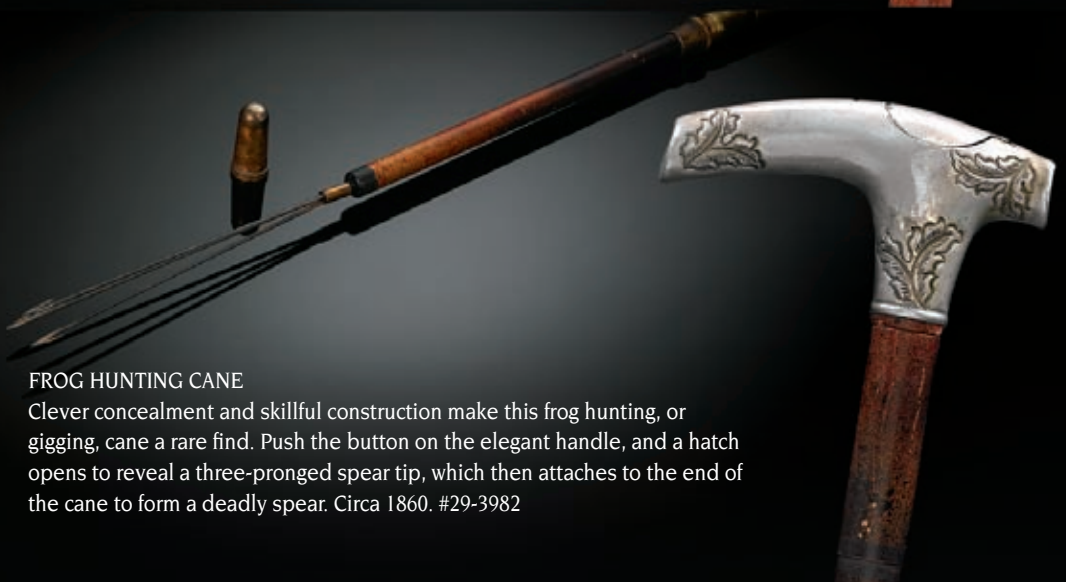
POP UP TOLEDO SWORD CANE

A pull on the curved horn handle of this pop up sword cane releases an exquisite double-edged Toledo sword with two hand guards that spring out upon opening. Sword signed "Toledo." #29-2400



DOG WALKING CANE

Perfect for long walks with man's best friend, this handy cane features a working dog whistle carved into the bone handle, while a chain link leash is revealed when the cane's bottom portion is removed. Circa 1880. #29-3980



FROG HUNTING CANE

Clever concealment and skillful construction make this frog hunting, or gigging, cane a rare find. Push the button on the elegant handle, and a hatch opens to reveal a three-pronged spear tip, which then attaches to the end of the cane to form a deadly spear. Circa 1860. #29-3982

BAD BOY CANE

A tug on the knotted handle of this "Bad Boy" cane reveals the sharp razor blade concealed within the shaft. Razor blade canes such as this are among the rarest weapon canes, and to find one in such excellent condition is quite extraordinary. Circa 1870. #29-3988



IVORY HEAD GUN CANE

This exceptional gun cane, featuring a carved ivory Greco-Roman soldier's head on the grip, is both a pistol and a shotgun. The percussion-cap pistol can be removed from the shaft, or detach the ferrule to take a long-range shot. Caps and buckshot are both stored in the barrel. Circa 1870. #29-3994



on the cover

IVORY DOG CANE

A hand-carved ivory dog tops this wonderful cane, accentuated by amber-colored glass eyes and a floral silver collar. Circa 1880. #29-3167

GOTHIC TORTOISESHELL CANE

The exceptionally crafted gold Gothic style handle of this 18th-century cane is perfectly complemented by a tortoiseshell-veneered shaft and gold-rimmed eyelet. Circa 1790. #29-3815

NEPHRITE JADE CANE

This superb cane is topped with a handle of faceted nephrite jade. The natural rich qualities of the stone make it a perfect setting for the bright pink rubies that dot its surface. Circa 1915. #29-4010

FROG CANE

A carved frog is adorned with hand painted details and amber eyes in this decorative rosewood English cane. A sterling collar reads "M. Nickalls/Boxley Abbey/Maidstone/Spriggs London." Circa 1890. #29-3850



630 Royal Street • New Orleans, LA 70130
Toll Free 1-866-349-0739 • 504-523-5660
info@rauantiques.com • www.rauantiques.com

To see a demonstration of this biologist cane and many others, visit our New Orleans gallery, or call toll-free 866-349-0739 for pricing.



BIOLOGIST'S CANE

One of the most outstanding system canes we have ever offered, this biologist's cane is in complete, original condition. Essentially a portable laboratory, it places a variety of scientific instruments and experimental necessities within easy reach. Included within the shaft are a working microscope with glass slides, a telescope, vials for specimens, and various materials for the collection and recording of data. #29-3991